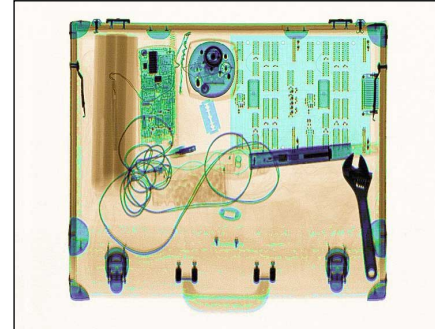




**Control
Screening**

DYNAVISION® 6550

High Capacity Parcel X-ray Scanner



*Now available with ultra sharp 24/32 bit
Imaging; TIP and Image Archiving.*

Control Screening is the leading worldwide producer of reliable, sophisticated X-ray, Metal and Trace Detection screening systems. Visit us at www.controlscreening.com. Ask about our mobile and larger tunnel systems. Our advanced systems can be readily integrated into existing security arrangements.

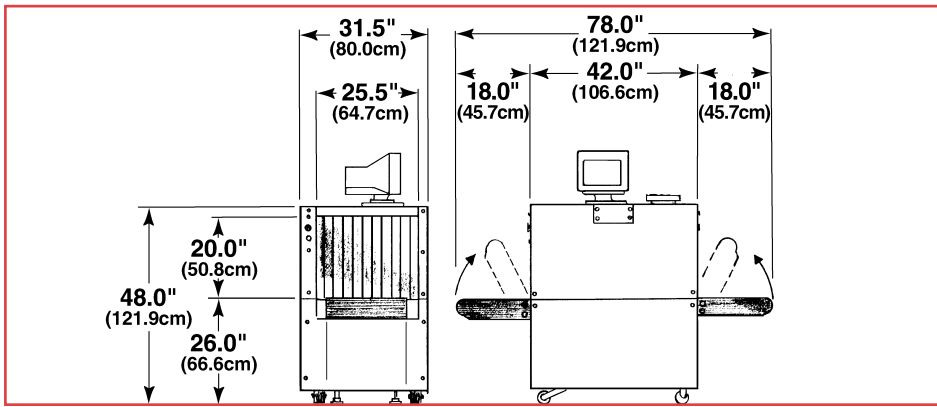
DYNAVISION® 6550 is a high capacity & penetration compact heavy duty-conveyorized X-ray scanner designed to inspect carry-on bags, briefcases, purses, mail trays and parcels. Designed for use in:

Airports • Seaports • Courts • Hospitals • Agricultural
Corporate Facilities • Government Buildings • Inspection
Mailrooms • Loading Docks • Corrections
Nuclear Power Stations • Special Events • Rentals

- Engineered with advanced technology for the detection of weapons, explosives, drugs, contraband, and today's more sophisticated threat items.
- Features larger tunnel opening 65 cm W x 50 H (25.5" x 20.0").
- Conveniently fits through 32" wide doorway, in elevators and tight spaces; both conveyor ends fold up.
- Proven reliability and excellent X-ray imaging, robust, user friendly controls and features.
- Multi-Energy® Option distinguishes plastic explosives, narcotics and other organics from guns, knives and other inorganics using different colors, and can instantaneously strip either organics or inorganic from the image for better clarity.
- Material Marking® option to Multi-Energy® automatically highlights suspected items by combining atomic number range and density, for even better discrimination.
- Standard compact version or airport version with extended conveyor or high speed exit conveyors. Available with high resolution Dynagraphy™ or Multi-Energy® color imaging.
- Patented automatic, guided conveyor belt system never needs adjustment.
- Many advanced imaging features included: Dynagraphy™ color, automatic threat alert, multiple zoom, and automatic image, stripping, and penetration enhancements.
- Autosensing™ eliminates troublesome photo-sensors and provides guaranteed 100% screening of thin items such as courier envelopes.
- Interactive training and highly responsive service at all times. Made in the USA.

(shown with optional rollerbed)

DYNAVISION® 910 X-ray Scanner



■ PHYSICAL DETAILS

Dimensions: see drawing

Weight: 753 lbs (342 kg)

1084 lbs (492 kg) crated

Construction: Cantilevered frame, heavy gauge steel cabinet on casters with leveling jacks. Stainless steel command center keypad mountable on side, top or optional remote monitor cart or desk.

Environmental Conditions:

Temperature range: 32° to 113°F

0° to 45° C. Humidity 10 - 90%, non-condensing.

Electrical Power:

Consumption: < 1.0 Kva

120 volts a.c. ± 10% (10 amps)

220 volts a.c. ± 10% (5 amps)

Copyright 2001-2003 Control Screening LP, all rights reserved. Printed in USA.

Due to continuing product improvements, these specifications are subject to change.

■ INSPECTION CAPABILITY

Tunnel Size: 25.5" wide (64.8cm)

20.0" high (51.3cm)

L-shaped detector array for 100% package screening.

Standard conveyor pictured above. (910)

Extended conveyor length Model 910E

(30" entrance and 60" exit bed length

for 132" L overall).

Penetration: 29-31mm typical with available scintillation crystals.

Contrast sensitivity: 2 million color tones with 24/32 bit system.

Resolution: 38 AWG wire #30 AWG through 7th step aluminum stepwedge.

Conveyor Speed:

48 feet per minute at 60Hz. 14.4 meters per minute at 50Hz. Reverse capability included. Autoscan *without* photosensors. Toggles for easy belt changeover. Conveyor extension ends are rounded and fold up for elevator, or ease of transport.

■ VIDEO SYSTEM

Standard with 15" color monitor. High resolution, flicker free, .28 dot pitch, low rad. monitor 1280 x 1024. Standard Dynagraphy™ color is based on object density. Dual Energy® color option with dual monitors, displays organics in orange, and inorganics in green and blue.

■ X-RAY GENERATOR

Self-contained shielded tank

High voltage rating: 160 kV

Operating voltage: 140 kV

Duty Cycle: 100% with sealed oil bath cooling

Beam orientation: diagonal

Dose rate per exam: 0.1 mR typical

■ X-RAY DETECTOR

Surface mounted, fully integrated, high frequency, with solid state detectors individually amplified using high speed processors with advanced digital signal processing for ultimate picture quality, 24/32 bit electronics available.

■ OPERATOR CONTROLS

Standard Functions:

- Stainless steel command center with heavy duty switches
- Scan enhancement
- Light & dark enhancement
- Negative/Positive Image
- Data elimination (stripping)
- 2x and 4x zoom
- Automatic threat alert (in red or white)
- Color - On/Off
- High/low density (selectable)
- Conveyor direction
- Edge enhancement
- High resolution mode
- High penetration mode
- Fast (25 second) warmup time

CUSTOM OPTIONS

- Multi-Energy® (M) organic and inorganic material identification
- Material Marking
- Threat Image Projection (TIP)
- Roller bed or parcel collector extensions
- Conveyor extensions
- 17" or 20" monitors
- Image Archiving; Remotes
- Tropical kit
- Power conditioning units or UPS
- Locking monitor hood
- Recessed folding command center
- kV, MA meter and item counter
- Custom cabinet colors or image palettes
- Footpad or optical On/Off
- CE marking compliance
- Economical 90 keV generator

■ COMPLIANCE

Complies with the U.S. Federal Aviation Administration Standards "Use of X-Ray Systems" (Federal Standards 14 CFR 108.17 and 14 CFR 129.26; the system conforms to the USBRH Performance Standards for Cabinet X-Ray Systems (21 CFR 1020.40). ISO 9001 compliant.

Emergency stop buttons. Cluster LED X-Ray "ON" indicators for lower maintenance. The electrical system conforms to applicable sections of IEC 348 for Electrical Safety and FCC Docket 20780 for Electromagnetic capability

Headquarters Office Corporate & International Sales

Control Screening

2 Gardner Road

Fairfield, NJ 07004-2206 USA

(800) 231-6414

+ (973) 276-6161

Fax: + (973) 276-6162

e-mail: sales@controlscreening.com

website: www.controlscreening.com

State & Local Government Sales

Control Screening

35 W. Pittsburgh St

Greensburg, PA 15601 USA

+ (724) 837-5411 • Fax: + (724) 837-5425

e-mail: pa@controlscreening.com

website: www.controlscreening.com

In Canada

Scintrex Trace Detection

150 Cleopatra Drive, Ottawa, Ontario, K2G 5X2

Tel: + (613) 224-1061 Fax: + (613) 224-3496

trace website: www.tracedetection.com

In Asia

Control Screening - Seacor

20 Harbour Drive, PSA Vista 05-01A,

Singapore, 117612

Tel: + 65 872-1123 Fax: + 65 872-2762

e-mail: asia@controlscreening.com

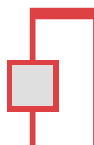
In Europe

90 Avenue Denis Papin,

Saint-Jean-de-Braye, 45808F France

Tel: + 33 2 38 61 97 00 Fax: + 33 2 38 61 97 01

e-mail: ec@controlscreening.com



www.controlscreening.com www.tracedetection.com

Control Screening

Celebrating 65 years of excellence in design and service

Dynavision® Scintrex® CheckGate® Federal Labs® HandWand®