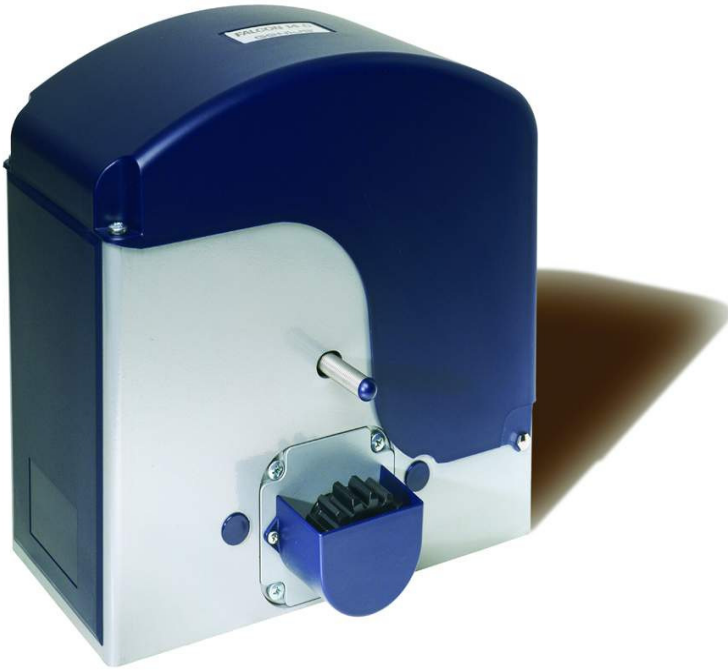
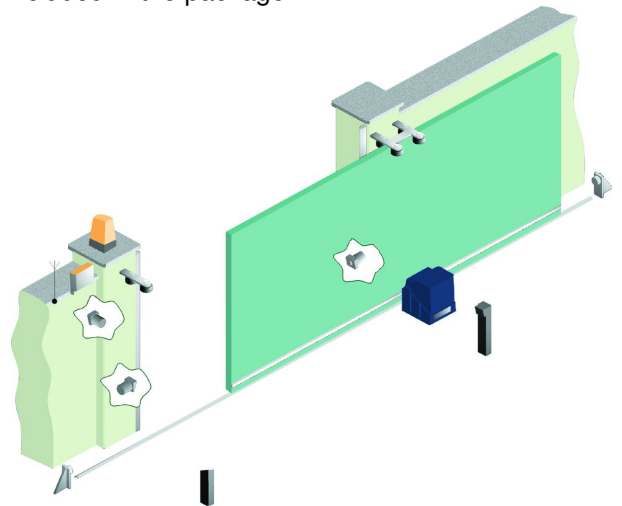


FALCON 14

FALCON 20 - 20-3Ph



FALCON 14 and FALCON 20, 20-3Ph are electro-mechanical gearmotors for moving heavy sliding gates of up to 1400 kg and 2000 kg respectively. A sturdy, safe, silent and compact gearmotor, with body entirely in painted cast aluminium, and motor section fully protected. The innovative drive transmission solutions make these gearmotors suitable for heavy duty tasks. A convenient release by a customised key enables manual movement in case of a power cut. The "C" versions have a built-in Genius control unit, with on-display programming, electronic clutch, decelerations and braking. By using the encoder (optional item), the exact position of the gate is assured during its entire movement, as well as a high level of safety. Installation accessories, foundation plate, initial thrust capacitor, plus fitting instructions are all included in the package.



Model	Version	Code
Falcon 14	Non-reversing Max. 1400 Kg	6110001
Falcon 14 C	Non-reversing Max. 1400 Kg, on-board control unit	6110002
Falcon 20	Non-reversing Max. 2000 Kg	6110021
Falcon 20 C	Non-reversing Max. 2000 Kg, on-board control unit	6110022
Falcon 20 3Ph	Non-reversing Max. 2000 Kg.	6110051